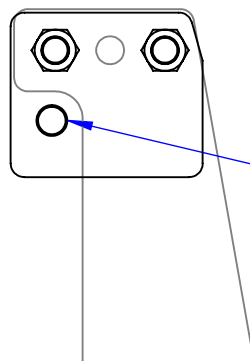
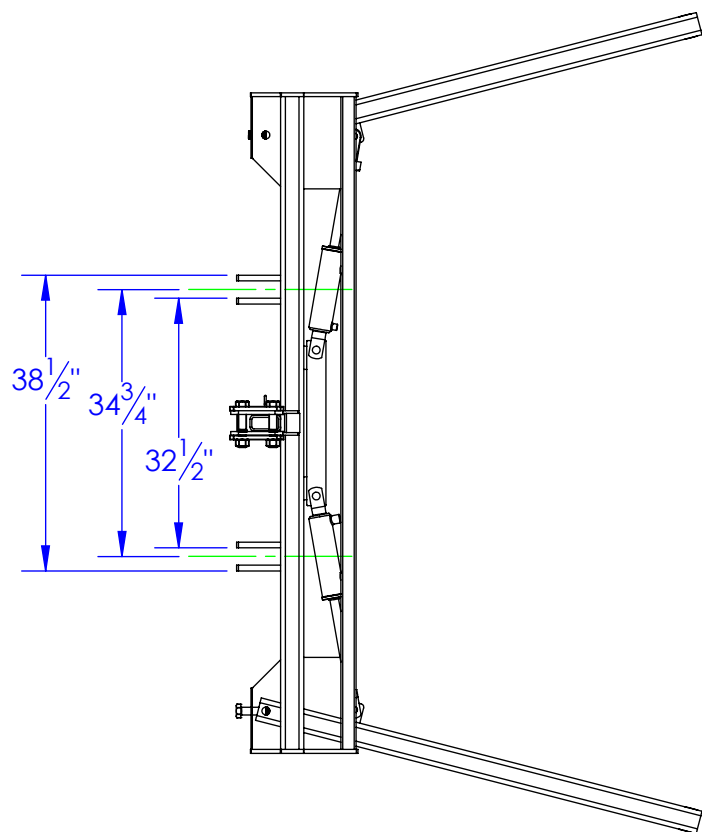
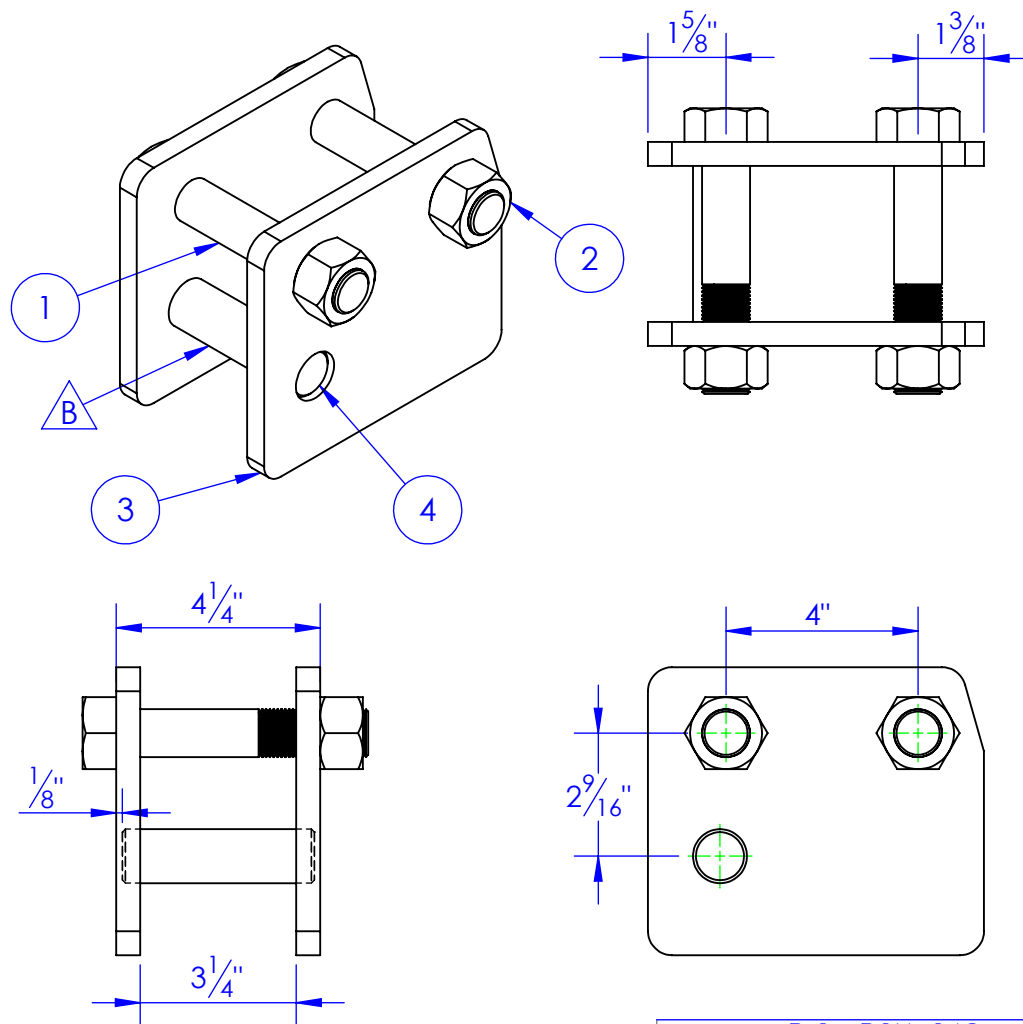


ITEM NO.	PART NUMBER	DESCRIPTION	MATERIAL	DRAWING #	QTY.
1	BO-1x5-1/4 HCS	BOLT 1 x 5-1/4 HEX		STOCK	2
2	BO-1 HLN	1" LOCK NUT		STOCK	2
3	FP-TM2-4	QUICK TACH FOR TM-2000	1/2" PLATE	70-2106	2
4	STC-CR 1.125x4142 L 4	LENGTH: 4"	CF ANN 4142 1-1/8 RDx 12	STOCK	1

REV.	REVISIONS	DATE	APPROVED
A	DESCRIPTION INITIAL RELEASE	1/14/2013	
B	REMOVED ST-MT & RE-PN C1x562	1/17/2013	



CATEGORY 2



PROPRIETARY AND CONFIDENTIAL
THE INFORMATION CONTAINED IN THIS
DRAWING IS THE SOLE PROPERTY OF TRIPLE
C INC. ANY REPRODUCTION IN PART OR
AS A WHOLE WITHOUT THE WRITTEN
PERMISSION OF TRIPLE C INC. IS PROHIBITED.

DIMENSIONS ARE IN INCHES
TOLERANCES:
FRACTIONAL $\pm 1/16$
ANGULAR: MACH ± 1 BEND \pm
TWO PLACE DECIMAL ± 010
THREE PLACE DECIMAL ± 005

MATERIAL ---
DO NOT SCALE DRAWING

NAME	DATE
DRAWN HEATH	1/17/2013
PART #	
ASM #	OP-TM2000-QCA

COMMENTS:

QUICK HITCH
ADAPTER
CATEGORY 2

P.O. BOX 248,
SABETHA, KS 66534

TRIPLE C
INC.

SIZE A	DWG. NO. 70-1111 B	REV. B
SCALE: 1:4	WEIGHT: 12.60	SHEET 1 OF 1